

1100-1102  
Kermit Drive



The Oaks Tower



Garden South



For Lease  
Office Space



The information contained herein has been obtained from sources deemed to be reliable and we have no reason to doubt its accuracy or reliability; however, this information is provided without any guarantee, should be verified by interested parties, and is subject to change without notice or obligation. Horrell Company assumes no responsibility for the accuracy or reliability of the information herein.

# Property Overview

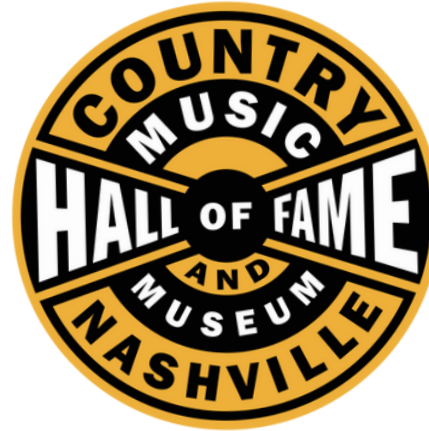
ADDRESS	1100-1102 Kermit Drive Nashville, TN
SIZE	118,240 $\pm$ SF
PRICE	\$16.00 - \$17.50 PSF
AVAILABLE	718 $\pm$ up to 16,627 $\pm$ SF
HIGHLIGHTS	Renovated Office Spaces Conference Rooms Available Outdoor Picnic Area 4.5 per 1,000 SF Parking Ratio Turn-Key Build Out Available



FOR LEASE



# Conveniently Located Within 15 Minutes:

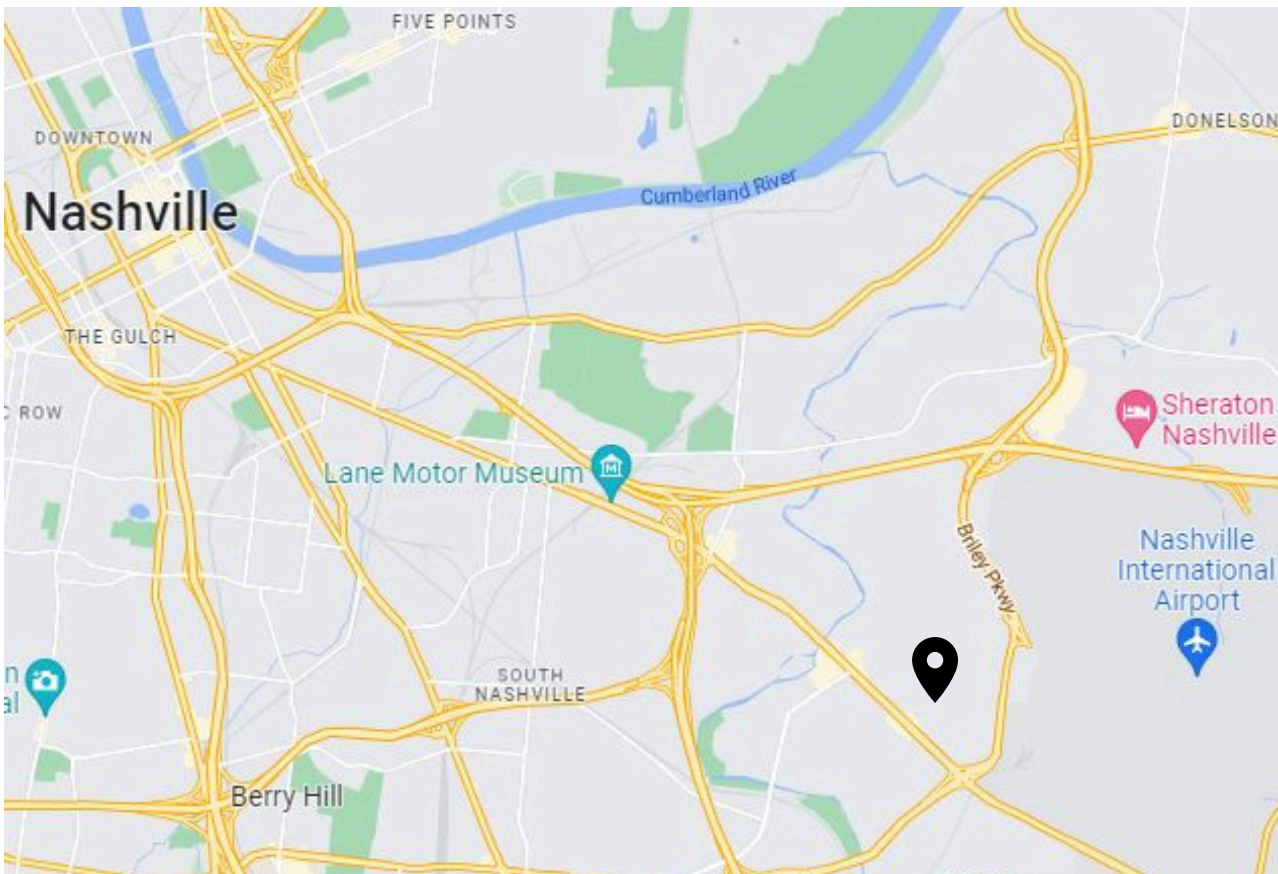


**POPEYES**



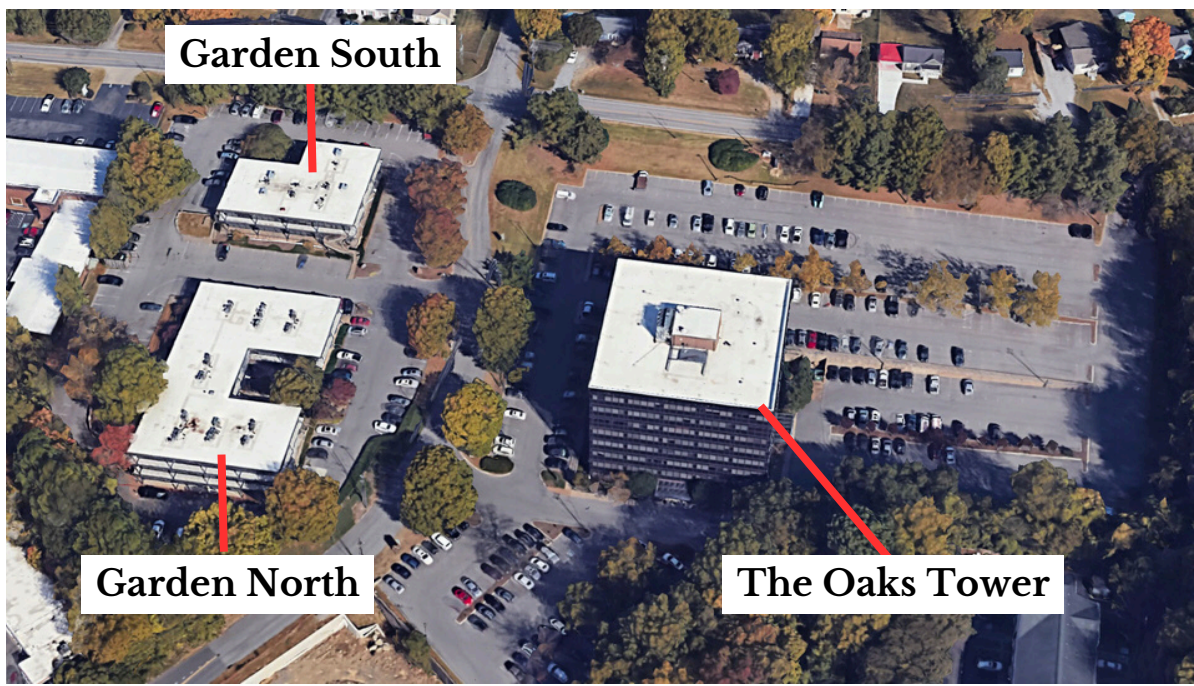
*Holiday Inn*





## Located Near:

- Nashville International Airport
- I-10
- I-65
- I-24
- I-440
- Briley Parkway

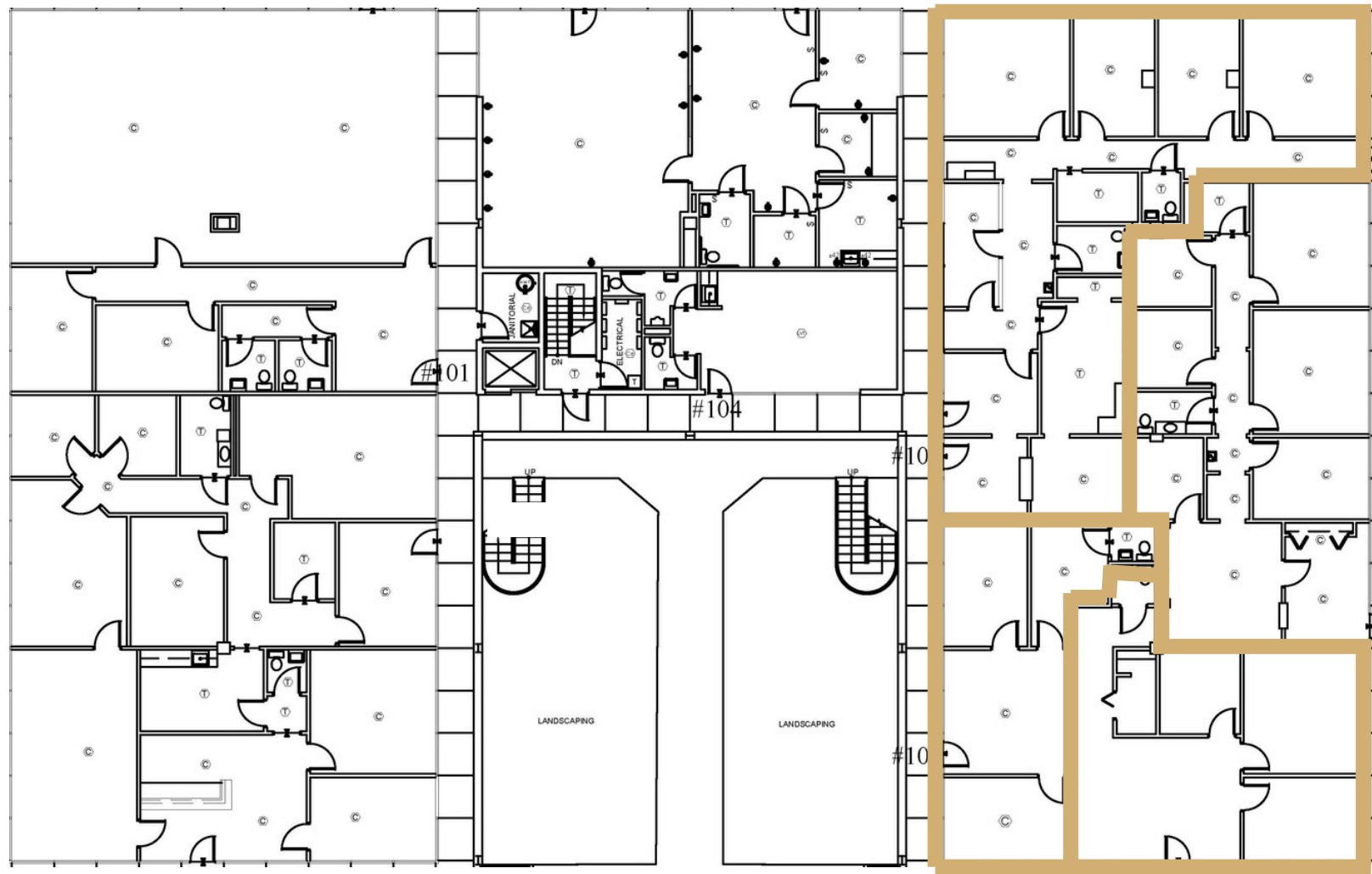


# The Garden South

Suite 106, 108 & 109 | Office

## Up To 4,127<sub>±</sub> SF Available

### Available: Now



**Suite 106**  
2,237<sub>±</sub> SF

**Suite 109**  
1,107<sub>±</sub> SF

**Suite 108 | 783<sub>±</sub> SF**

This information contained herein has been obtained from sources deemed to be reliable but is provided for demonstrative purposes only. This information is provided without any guarantee, its accuracy and reliability should be verified by interested parties, and it is subject to change without notice or obligation. Horrell Company assumes no responsibility for the accuracy or reliability of the information herein.

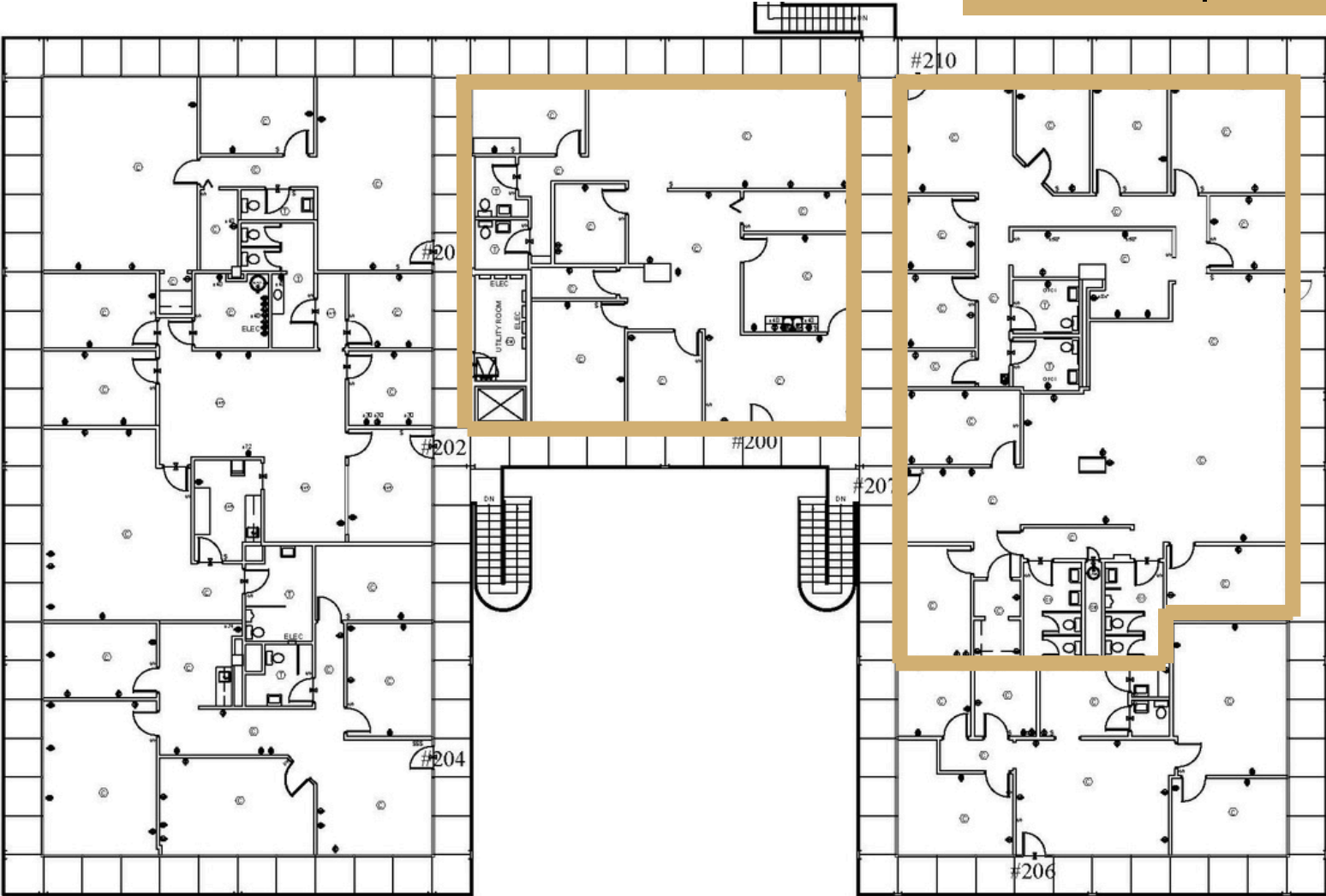


# The Garden South

Suite 200 & 207 | Office

Suite 200 | 2,381± SF

Suite 207 | 4,260± SF



This information contained herein has been obtained from sources deemed to be reliable but is provided for demonstrative purposes only. This information is provided without any guarantee, its accuracy and reliability should be verified by interested parties, and it is subject to change without notice or obligation. Horrell Company assumes no responsibility for the accuracy or reliability of the information herein.



# The Tower | First Floor

Fully Leased | Office



This information contained herein has been obtained from sources deemed to be reliable but is provided for demonstrative purposes only. This information is provided without any guarantee, its accuracy and reliability should be verified by interested parties, and it is subject to change without notice or obligation. Horrell Company assumes no responsibility for the accuracy or reliability of the information herein.

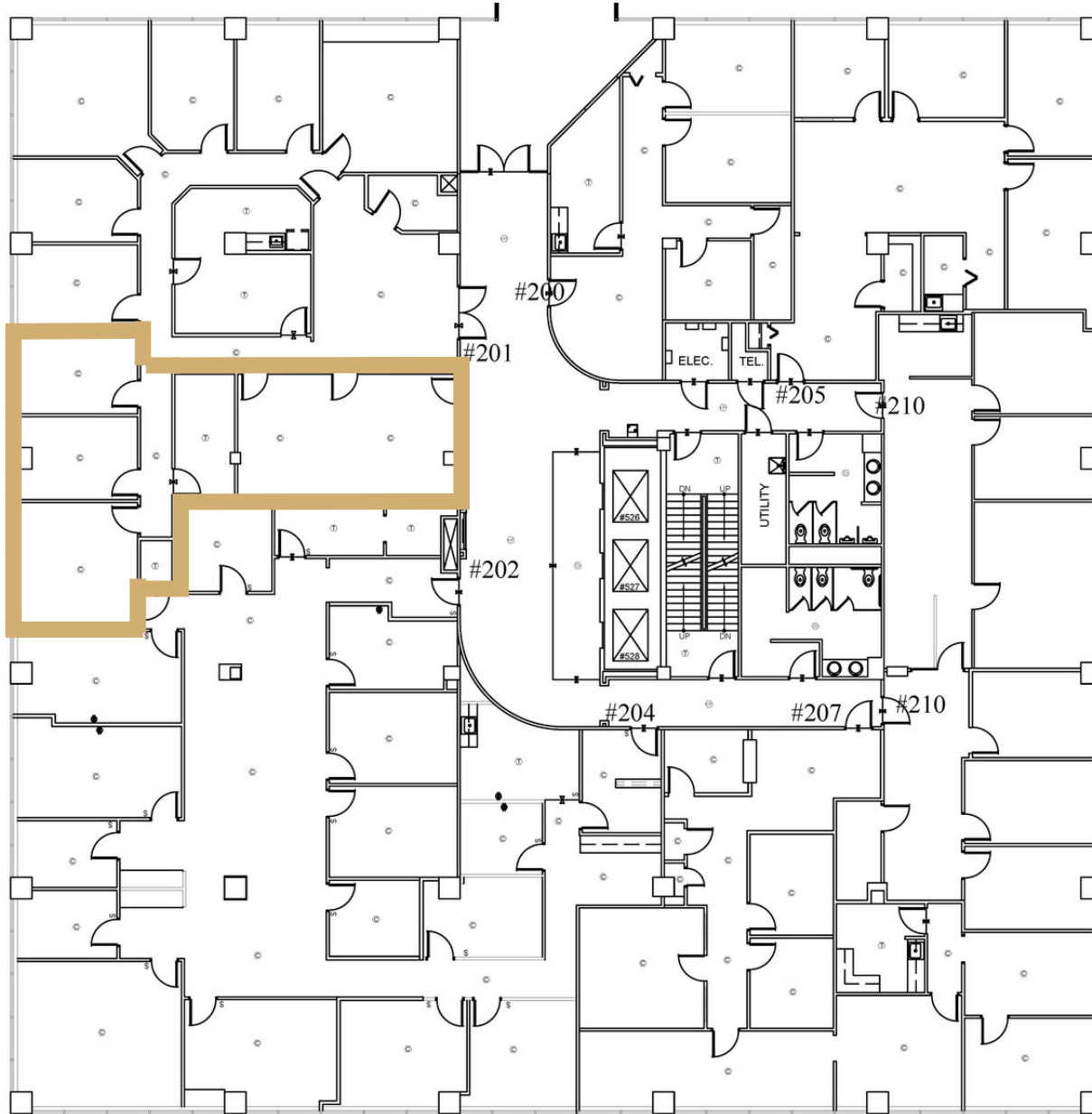


# The Tower | 2nd Floor

Suite 202 | Office

Suite 202 | 1,252 $\pm$  SF

## Available: Now



This information contained herein has been obtained from sources deemed to be reliable but is provided for demonstrative purposes only. This information is provided without any guarantee, its accuracy and reliability should be verified by interested parties, and it is subject to change without notice or obligation. Horrell Company assumes no responsibility for the accuracy or reliability of the information herein.





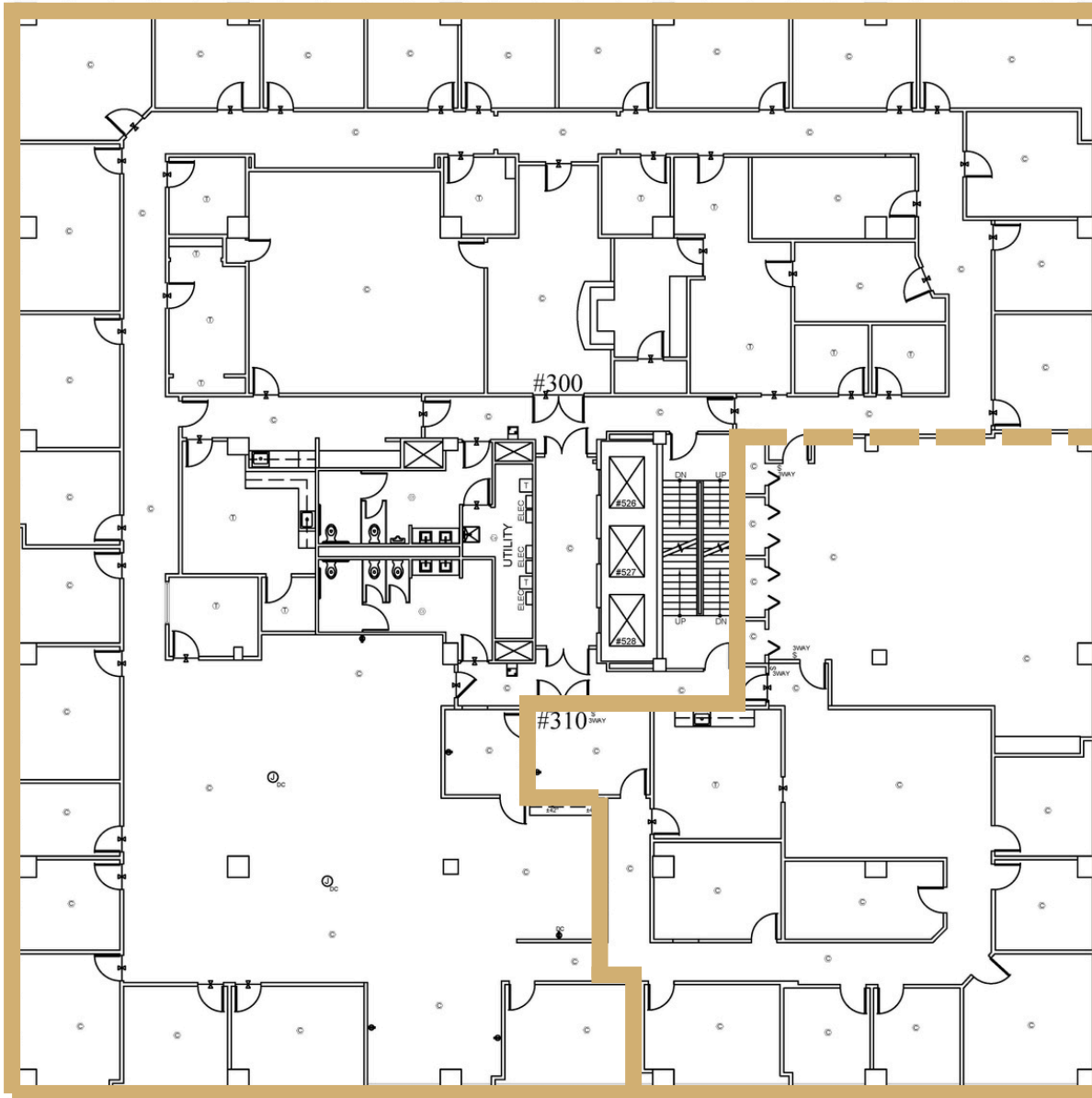
# The Tower | 3rd Floor

Suite 300 & 310 | Office

Suite 300 | 12,093<sub>±</sub> SF

Available: Now

Entire 3rd Floor  
Up To 16,627<sub>±</sub> SF Available



Suite 310 | 4,533<sub>±</sub> SF

This information contained herein has been obtained from sources deemed to be reliable but is provided for demonstrative purposes only. This information is provided without any guarantee, its accuracy and reliability should be verified by interested parties, and it is subject to change without notice or obligation. Horrell Company assumes no responsibility for the accuracy or reliability of the information herein.



# The Tower | 4th Floor

Fully Leased | Office

---



This information contained herein has been obtained from sources deemed to be reliable but is provided for demonstrative purposes only. This information is provided without any guarantee, its accuracy and reliability should be verified by interested parties, and it is subject to change without notice or obligation. Horrell Company assumes no responsibility for the accuracy or reliability of the information herein.



# The Tower | 5th Floor

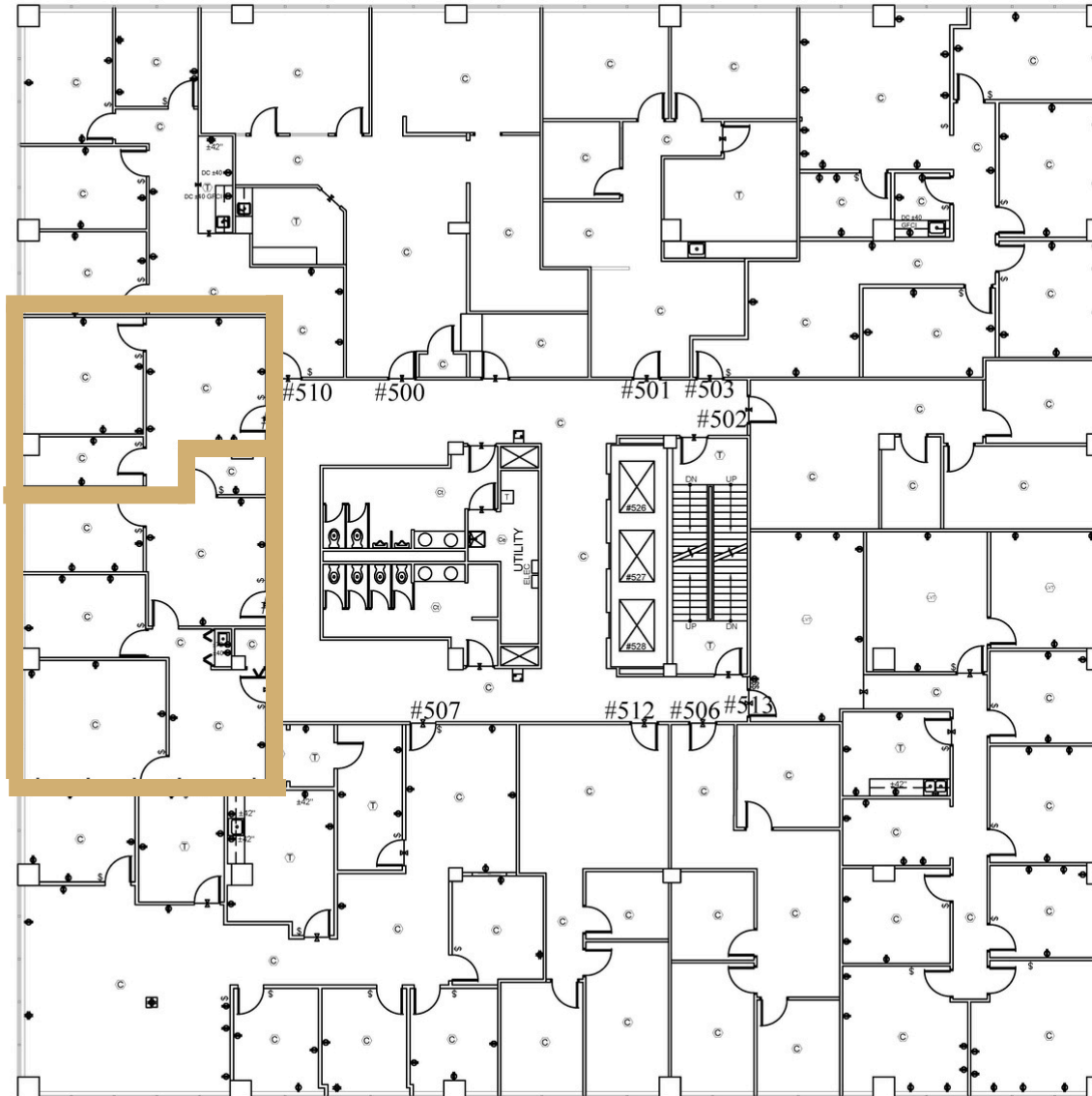
## Up To 1,830<sub>±</sub> SF Available

Suite 515 & 519 | Office

## Available: Now

Suite 519  
613<sub>±</sub> SF

Suite 515  
1,217<sub>±</sub> SF



This information contained herein has been obtained from sources deemed to be reliable but is provided for demonstrative purposes only. This information is provided without any guarantee, its accuracy and reliability should be verified by interested parties, and it is subject to change without notice or obligation. Horrell Company assumes no responsibility for the accuracy or reliability of the information herein.



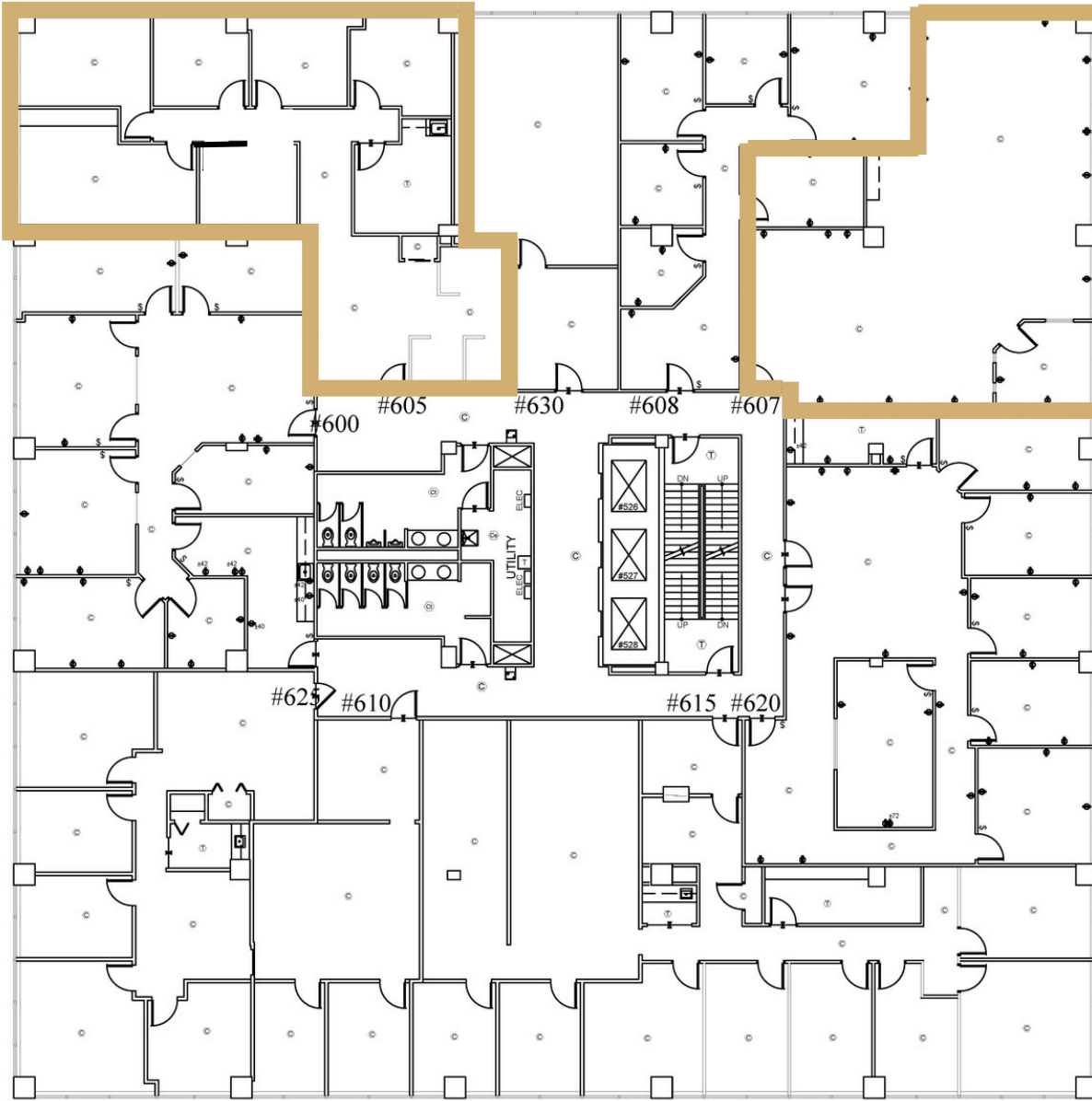
# The Tower | 6th Floor

Suite 605 & 607 | Office

Suite 605 | 1,979<sub>±</sub> SF

Available: Now

Suite 607 | 1,662<sub>±</sub> SF

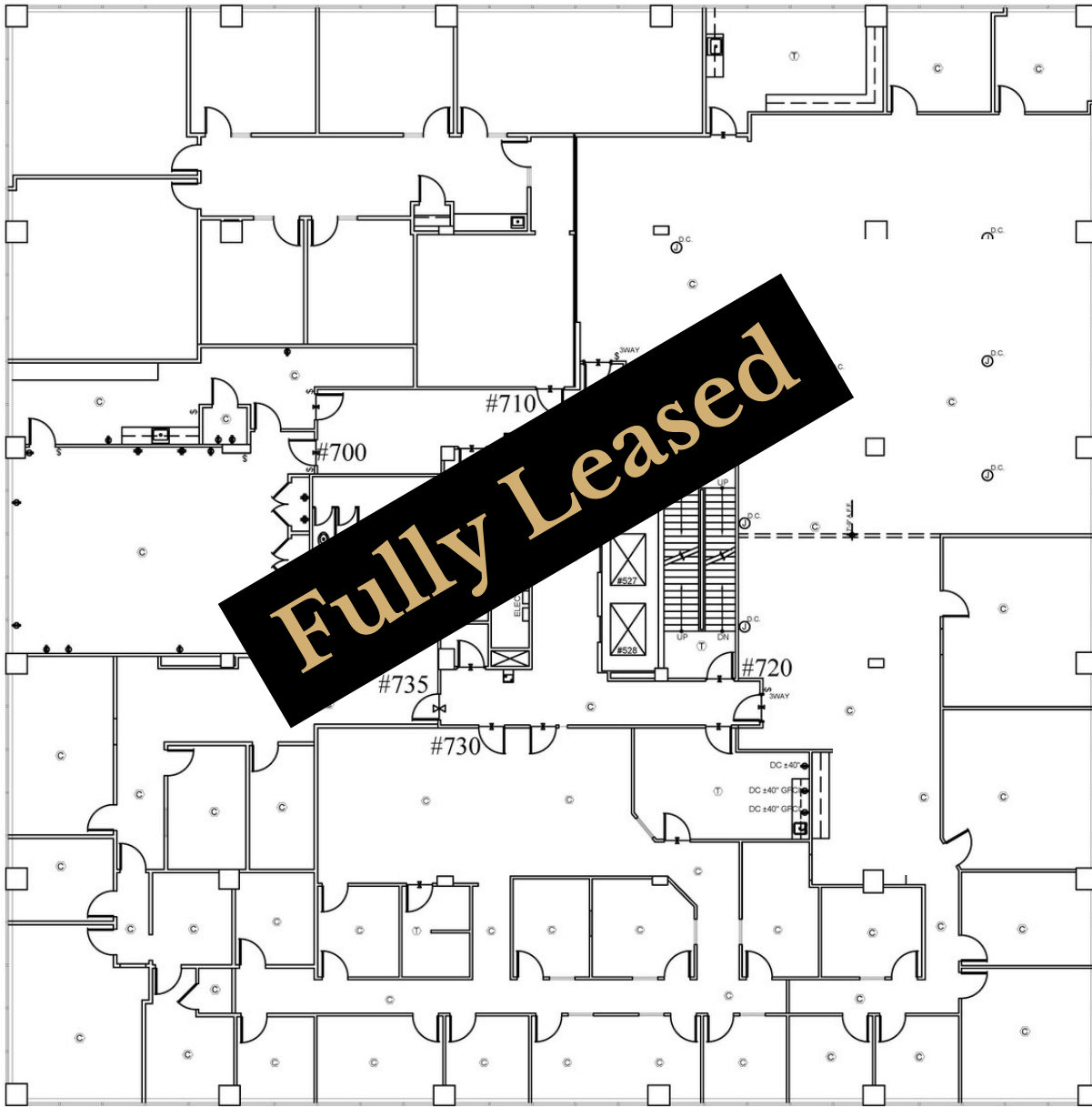


This information contained herein has been obtained from sources deemed to be reliable but is provided for demonstrative purposes only. This information is provided without any guarantee, its accuracy and reliability should be verified by interested parties, and it is subject to change without notice or obligation. Horrell Company assumes no responsibility for the accuracy or reliability of the information herein.



# The Tower | 7th Floor

Fully Leased | Office



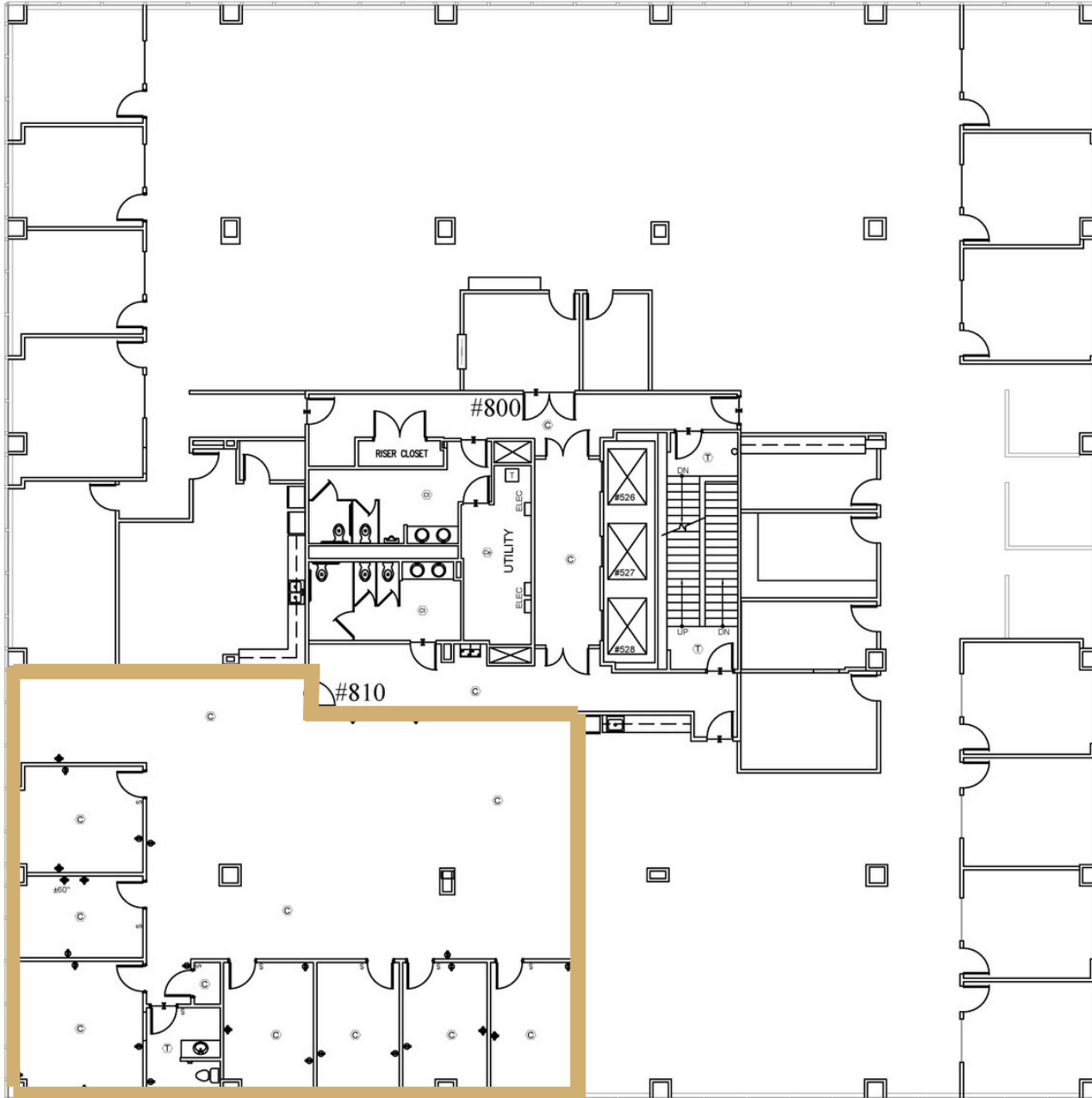
This information contained herein has been obtained from sources deemed to be reliable but is provided for demonstrative purposes only. This information is provided without any guarantee, its accuracy and reliability should be verified by interested parties, and it is subject to change without notice or obligation. Horrell Company assumes no responsibility for the accuracy or reliability of the information herein.



# The Tower | 8th Floor

Suite 810 | Office

Available: Now



Suite 810 | 3,590<sub>±</sub> SF

This information contained herein has been obtained from sources deemed to be reliable but is provided for demonstrative purposes only. This information is provided without any guarantee, its accuracy and reliability should be verified by interested parties, and it is subject to change without notice or obligation. Horrell Company assumes no responsibility for the accuracy or reliability of the information herein.





# Contact Me

Laura Grider

M 615-604-7425

O 615-256-7114

[lgrider@horrellcompany.com](mailto:lgrider@horrellcompany.com)



3030 Sidco Drive

Nashville, TN 37204

[www.horrellcompany.com](http://www.horrellcompany.com)